

1 **Supplementary material** for *Van der Burght et al.: Differential contributions of inferior frontal gyrus*
 2 *subregions to sentence processing guided by intonation*

3
 4 **Table S1:** Analysis of log response times. Results from linear mixed effects model including as fixed
 5 effects the interaction terms TMS site (aIFG, pIFG, vertex) * decision type (syntactic, semantic) and
 6 focus position (subject, object) * decision type. Random effects included by-subject random slopes
 7 for the interaction between decision type and TMS site and for focus position, and random intercepts
 8 for subject and items. Model formula: $\log(\text{RT}) \sim \text{decision type} * \text{TMS site} + \text{decision type} * \text{focus}$
 9 $\text{position} + (1 + \text{decision type} * \text{TMS site} + \text{focus position} | \text{subject}) + (1 | \text{item})$

<i>fixed effect name</i>		<i>estimate</i>	<i>SE</i>	<i>t</i>				
(Intercept)		6.615	0.027	247.648				
decision.syntactic		-0.103	0.017	-5.882				
TMS.pIFG		-0.023	0.028	-0.824				
TMS.aIFG		-0.007	0.028	-0.251				
foc.subject		0.001	0.004	0.235				
decision.syntactic:TMS.pIFG		-0.027	0.014	-1.933				
decision.syntactic:TMS.aIFG		-0.017	0.011	-1.493				
decision.syntactic:foc.subject		0.012	0.002	5.590				
<i>random effect group</i>	<i>random effect name</i>	<i>SD</i>	<i>correlations</i>					
item	(Intercept)	0.038						
subj	(Intercept)	0.142						
	decision.syntactic	0.093	0.030					
	TMS.pIFG	0.153	0.199	0.091				
	TMS.aIFG	0.148	0.136	0.100	0.455			
	foc.subject	0.017	-0.306	0.048	0.258	0.063		
	decision.syntactic:TMS.pIFG	0.077	0.365	-0.343	0.139	0.243	-0.100	
	decision.syntactic:TMS.aIFG	0.055	0.218	-0.318	0.345	0.261	-0.367	0.515
Residual		0.253						

11
 12

13 **Table S2:** Analysis of accuracy rates. Results from generalized linear mixed effects model including as
 14 fixed effects the interaction terms TMS site (aIFG, pIFG, vertex) * decision type (syntactic, semantic)
 15 and focus position (subject, object) * decision type. Random effects included intercepts for subjects
 16 and items, and by-subject slopes for decision type and TMS site. Model formula: response ~ decision
 17 type * TMS + decision type * focus position + (1 + decision type + TMS site | subject) + (1 | item)
 18

<i>fixed effect</i>		<i>estimate</i>	<i>SE</i>	<i>z</i>	<i>p</i>
(Intercept)		2.368	0.189	12.560	<.001
decision.syntactic		0.153	0.068	2.253	0.024
TMS.pIFG		-0.391	0.155	-2.531	0.011
TMS.aIFG		-0.156	0.146	-1.070	0.285
foc.subject		0.108	0.023	4.608	<.001
decision.syntactic:TMS.pIFG		0.001	0.060	0.013	0.989
decision.syntactic:TMS.aIFG		0.020	0.061	0.334	0.738
decision.syntactic:foc.subject		-0.076	0.023	-3.236	0.001
<i>random effect group</i>	<i>random effect name</i>	<i>SD</i>	<i>correlations</i>		
item	(Intercept)	0.280			
subj	(Intercept)	0.966			
	decision.syntactic	0.268	0.747		
	TMS.pIFG	0.756	-0.408	-0.352	
	TMS.aIFG	0.689	-0.189	-0.206	0.524

19
20

21 **Table S3:** Analysis of log response times in function of electric field (Efield) strength. Results from
 22 linear mixed effects model including as fixed effects the interaction terms Efield-aIFG * decision type
 23 (syntactic, semantic), Efield-pIFG * decision type, decision type * focus position (subject, object), and
 24 session number as main effect. Random effects included intercepts for subjects and items, and by-
 25 subject slopes for decision type and focus position. Model formula: $\log(RT) = Efield\text{-}aIFG * decision$
 26 $type + Efield\text{-}pIFG * decision\ type + decision\ type * focus\ position + session\ number + (1 + decision$
 27 $type + focus\ position | subject) + (1 | item)$.
 28

<i>fixed effect</i>	<i>estimate</i>	<i>SE</i>	<i>t</i>	
(Intercept)	6.701	0.038	176.274	
Efield.aIFG	0.001	0.009	0.065	
decision.syntactic	-0.118	0.020	-5.800	
Efield.pIFG	-0.017	0.005	-3.333	
sess.no2	-0.101	0.007	-14.732	
sess.no3	-0.192	0.007	-27.604	
foc.subject	-0.001	0.004	-0.049	
Efield.aIFG:decision.syntactic	-0.043	0.008	-5.395	
decision.syntactic:Efield.pIFG	-0.010	0.005	-2.020	
decision.syntactic:foc.subject	0.010	0.002	4.221	
<i>random effect group</i>	<i>random effect name</i>	<i>SD</i>	<i>correlations</i>	
item	(Intercept)	0.036		
subj	(Intercept)	0.204		
	decision.syntactic	0.109	0.382	
	foc.subject	0.015	-0.093	-0.080
Residual		0.260		

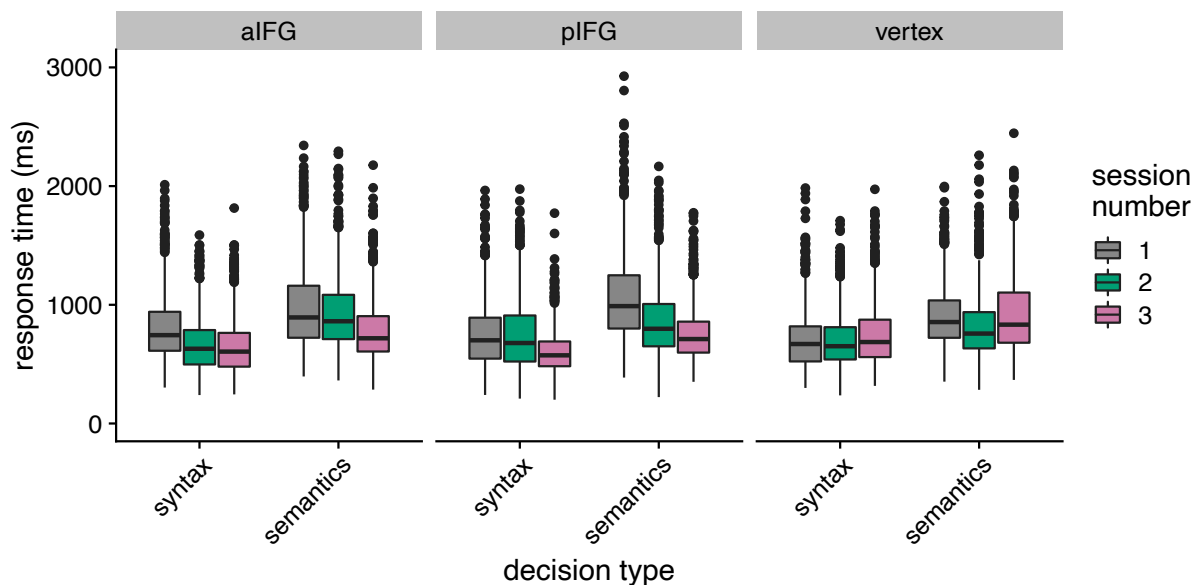
29
 30 **Table S4:** Analysis of accuracy rates in function of electric field (Efield) strength. Results from
 31 generalised linear mixed effects model including as fixed effects the interaction terms Efield-aIFG *
 32 decision type (syntactic, semantic), Efield-pIFG * decision type, decision type * focus position
 33 (subject, object), and session number as main effect. Random effects included intercepts for subjects
 34 and items. Model formula: $response = Efield\text{-}aIFG * decision\ type + Efield\text{-}pIFG * decision\ type +$
 35 $decision\ type * focus\ position + session\ number + (1 + decision\ type + violation\ type | subject) + (1 |$
 36 $item)$

<i>fixed effect</i>	<i>estimate</i>	<i>SE</i>	<i>z</i>	<i>p</i>
(Intercept)	1.538	0.199	7.719	<.001
Efield.aIFG	0.007	0.097	0.076	0.939
decision.syntactic	0.176	0.061	2.859	0.004
Efield.pIFG	-0.159	0.066	-2.417	0.016
sess.no2	0.580	0.080	7.277	<.001
sess.no3	0.982	0.087	11.322	<.001
foc.subject	0.021	0.083	0.260	0.795
Efield.aIFG:decision.syntactic	-0.014	0.052	-0.266	0.790
decision.syntactic:Efield.pIFG	-0.036	0.053	-0.687	0.492
decision.syntactic:foc.subject	-0.064	0.029	-2.221	0.026
<i>random effect group</i>	<i>random effect name</i>	<i>SD</i>	<i>correlations</i>	
item	(Intercept)	0.246		
subj	(Intercept)	1.004		
	decision.syntactic	0.240	0.814	
	foc.subject	0.413	-0.272	-0.090

37 **Table S5:** Acoustic analysis of the experimental stimuli. For each noun phrase, minimum and
 38 maximum pitch and mean intensity were extracted (measured across the duration of the noun
 39 phrase). The means (and standard deviations) across all stimuli are displayed here. Note the marked
 40 differences in pitch and intensity when each noun phrase was in focus as compared to when the
 41 noun phrase was not in focus. These differences were significant for the pitch differences (subject
 42 noun phrase: $z = -5.84$, $p < .001$; object noun phrase $z = -5.81$, $p < .001$) as well as for intensity (subject:
 43 $t(44) = 5.42$, $p < .001$; object: $t(44) = -11.63$, $p < .001$). The effect for intensity was tested using a paired
 44 t-test, whereas pitch differences were tested with a Wilcoxon paired rank test because normality
 45 assumptions were not met.
 46

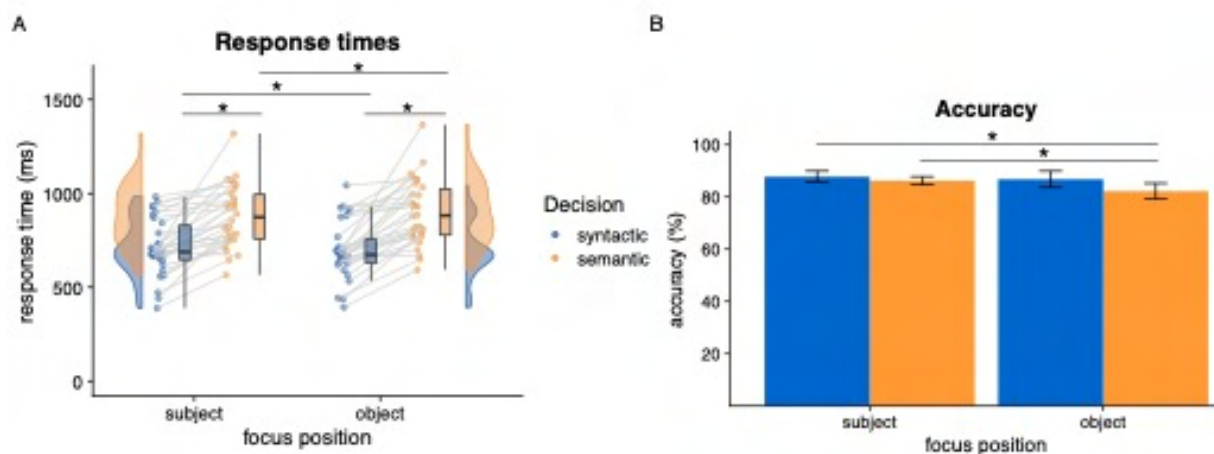
Noun phrase	Focus	Δ Pitch (Hz)	Intensity (Db)
subject	subject	103,6 (14,0)	61,7 (1,9)
subject	object	49,1 (11,0)	60,7 (1,9)
object	subject	31,2 (21,4)	58,8 (2,1)
object	object	108,5 (15,4)	61,9 (2,0)

47



48

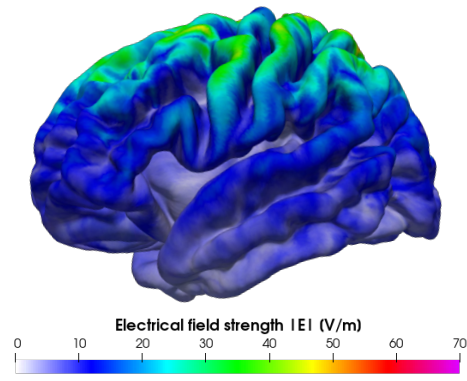
49 **Supplementary Figure 1** Response times for both tasks and all TMS conditions, separately for each
 50 experimental session.



51

52

53 **Supplementary Figure 2** Response times and accuracy rates in function of decision type and focus
 54 position, across all TMS sessions.

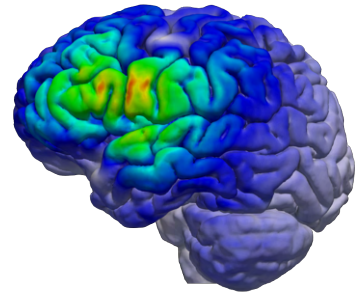
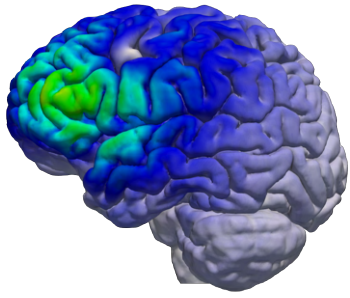


55
56 **Supplementary Figure 3** Electric field induced by TMS for the vertex stimulation condition in a
57 representative sample subject.

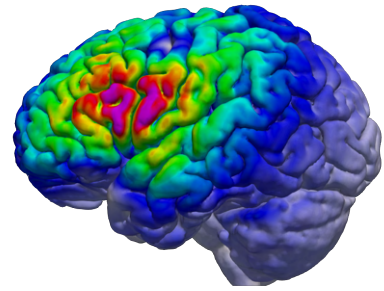
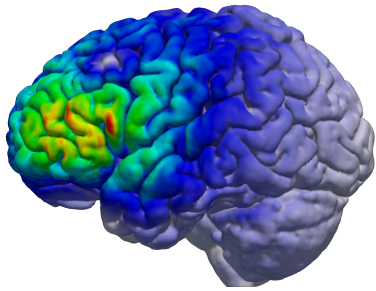
aIFG session

pIFG session

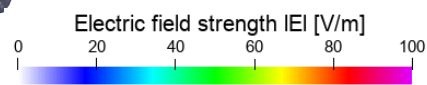
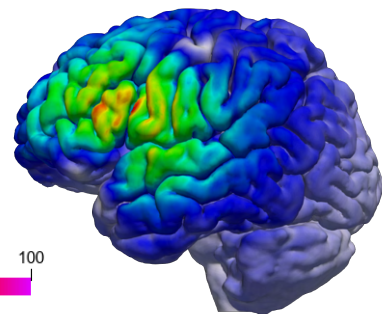
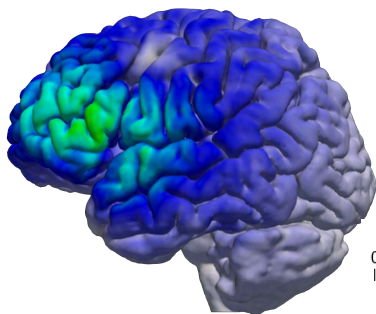
subject 1



subject 2



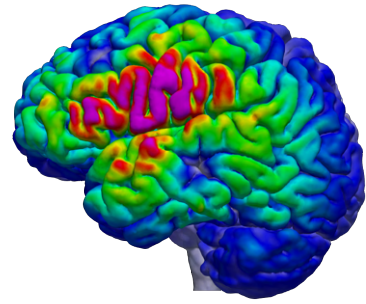
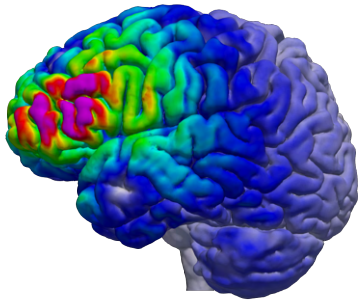
subject 3



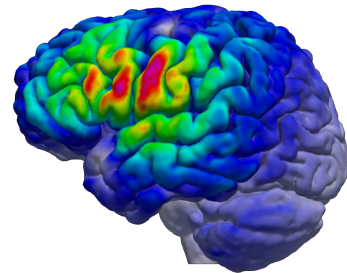
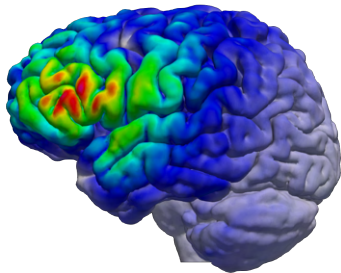
aIFG session

pIFG session

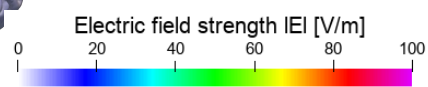
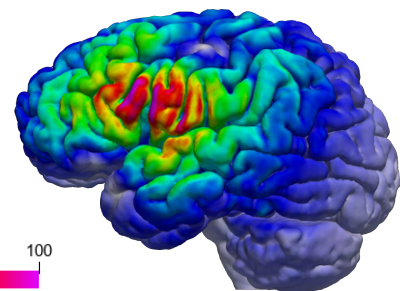
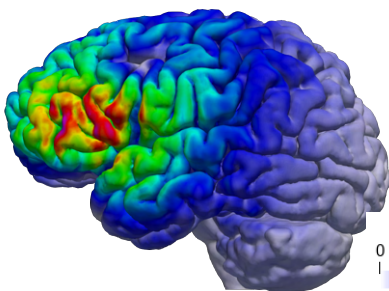
subject 4



subject 5



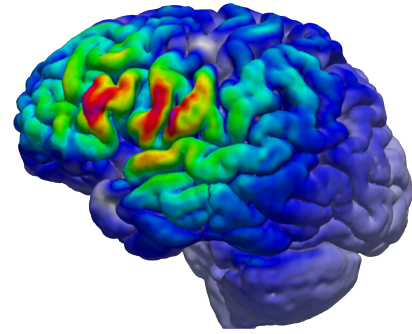
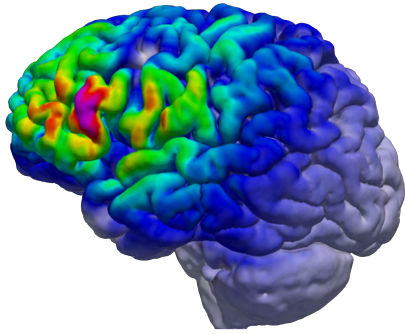
subject 6



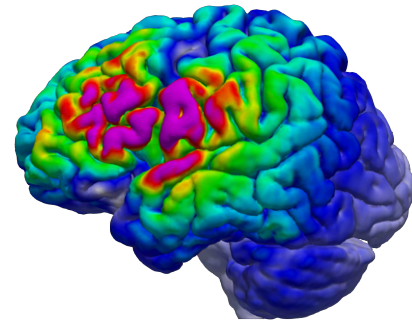
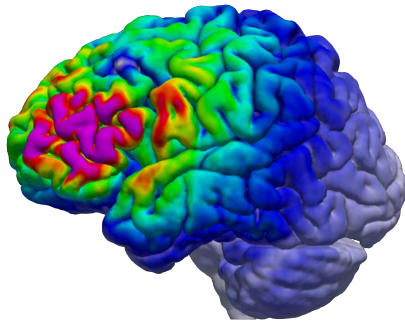
aIFG session

pIFG session

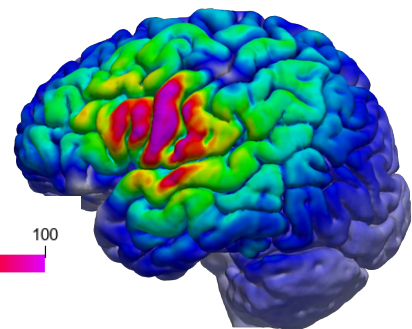
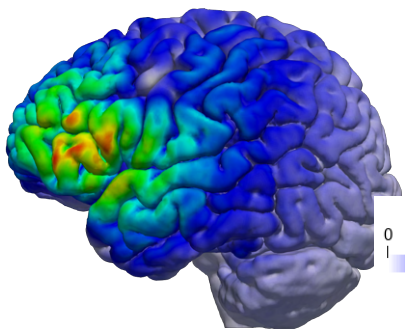
subject 7



subject 8



subject 9



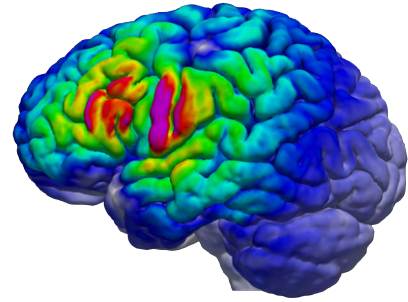
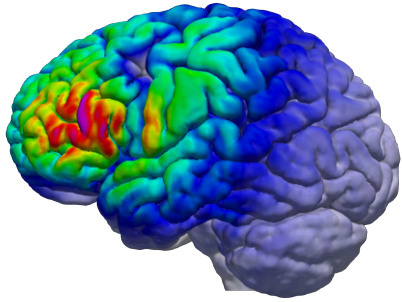
Electric field strength $|E|$ [V/m]

0 20 40 60 80 100

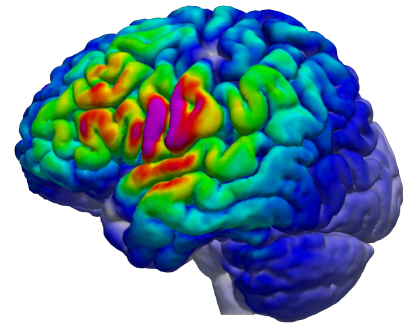
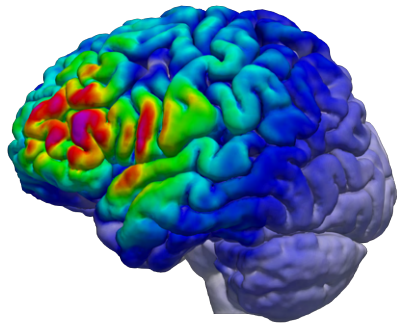
aIFG session

pIFG session

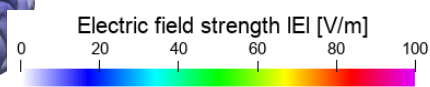
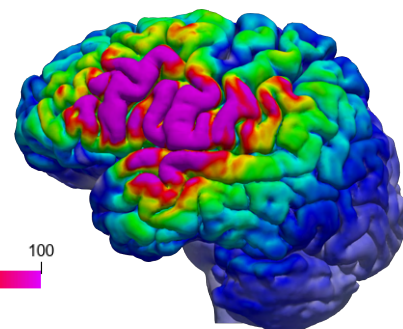
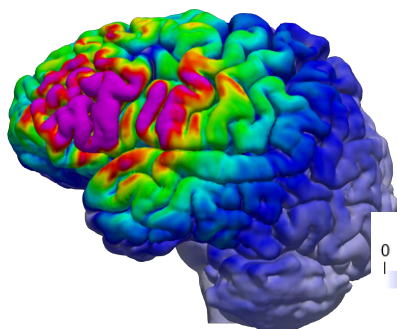
subject 10



subject 11



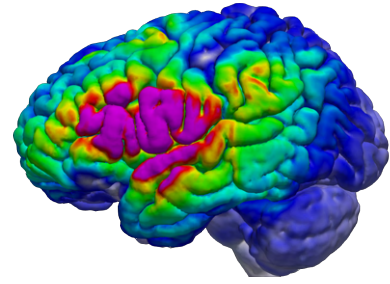
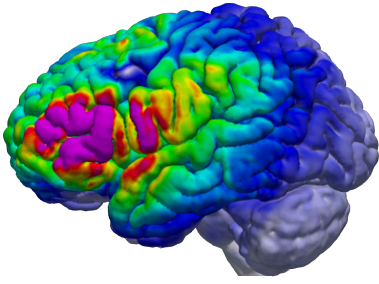
subject 12



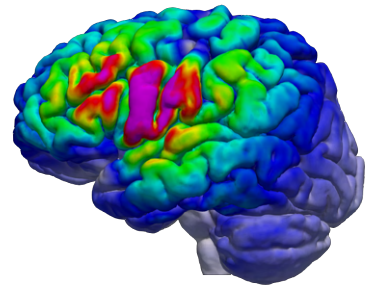
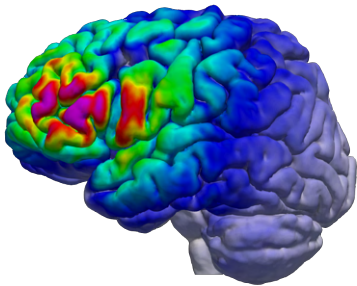
aIFG session

pIFG session

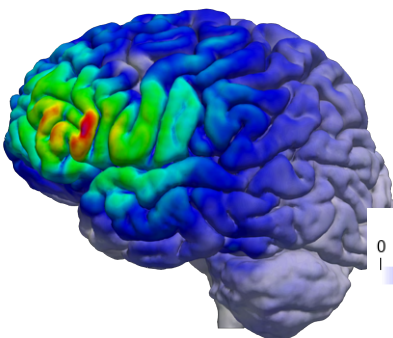
subject 13



subject 14

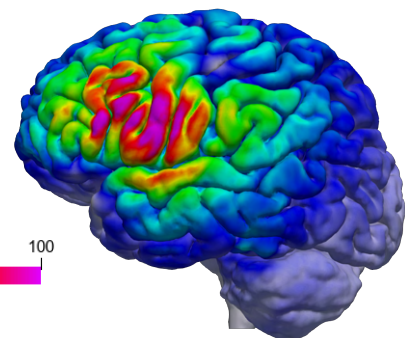


subject 15



Electric field strength $|E|$ [V/m]

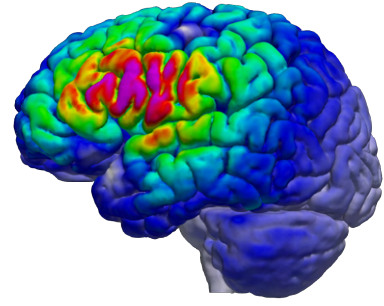
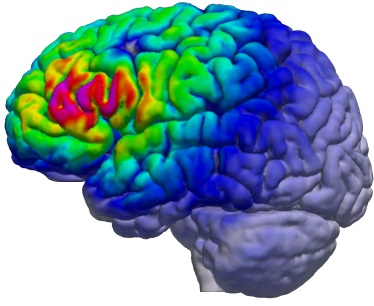
0 20 40 60 80 100



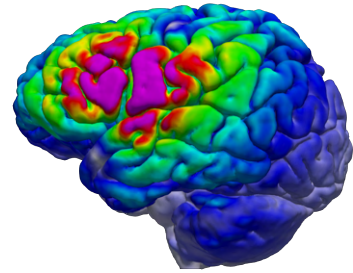
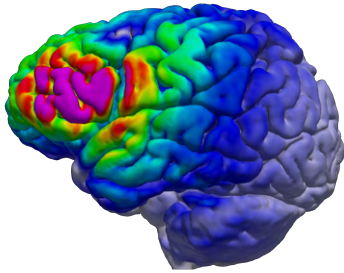
aIFG session

pIFG session

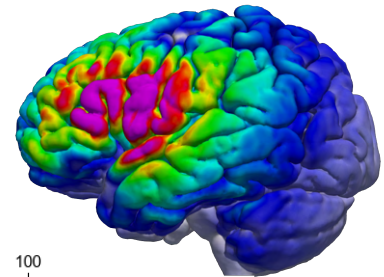
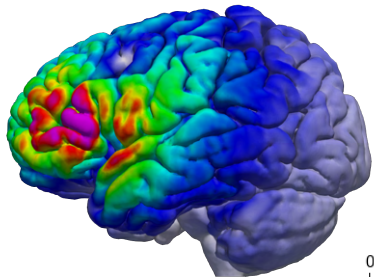
subject 16



subject 17



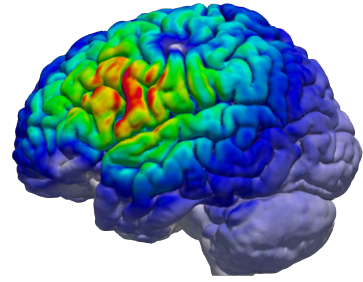
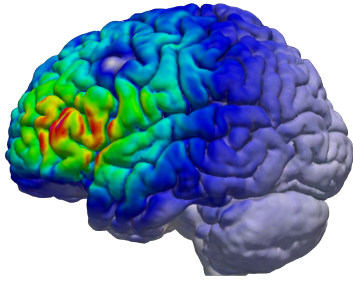
subject 18



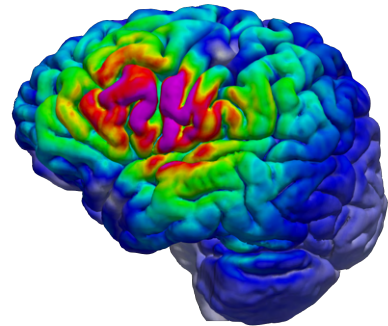
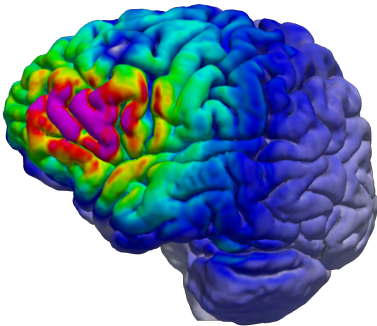
aIFG session

pIFG session

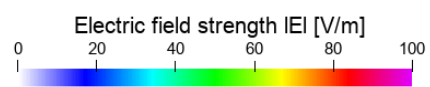
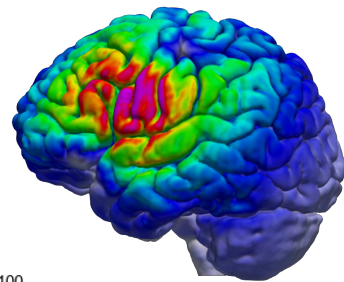
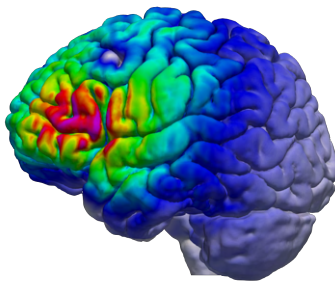
subject 19



subject 20



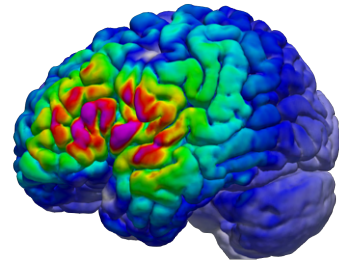
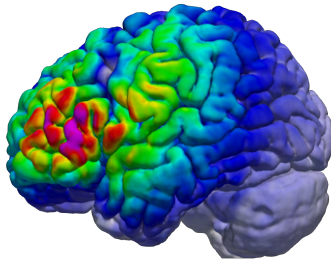
subject 21



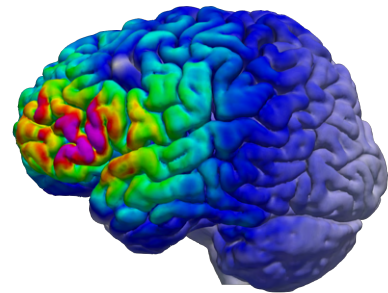
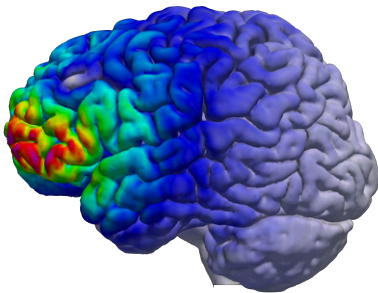
aIFG session

pIFG session

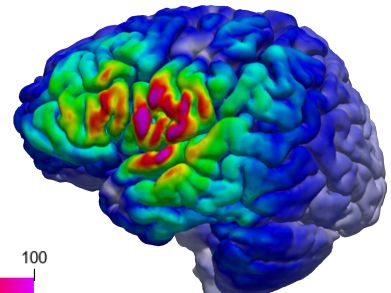
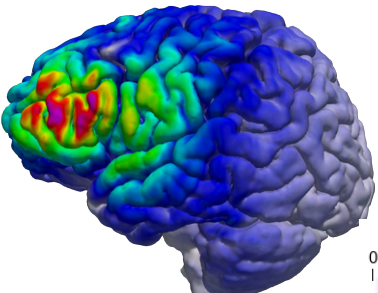
subject 22



subject 23



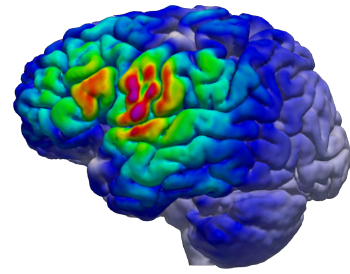
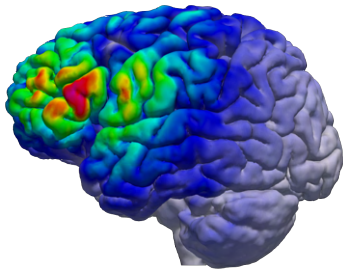
subject 24



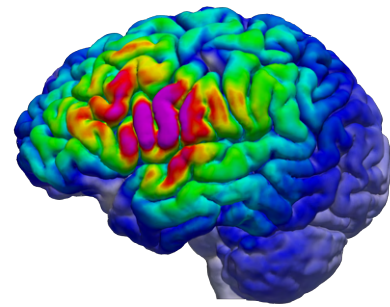
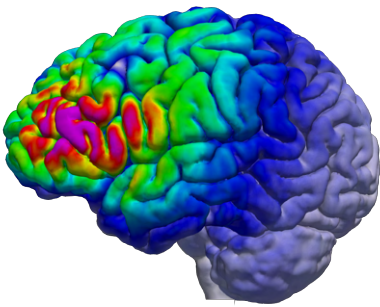
aIFG session

pIFG session

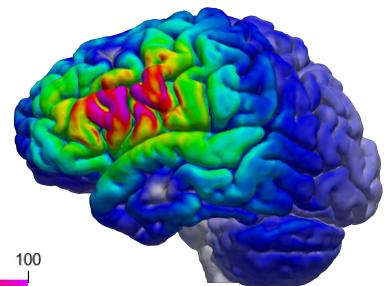
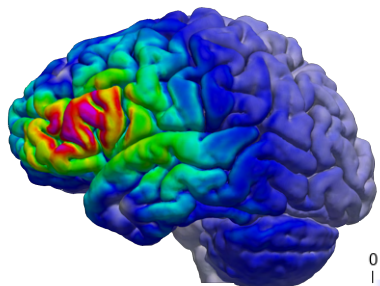
subject 25



subject 26



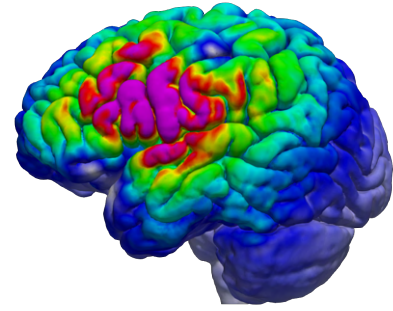
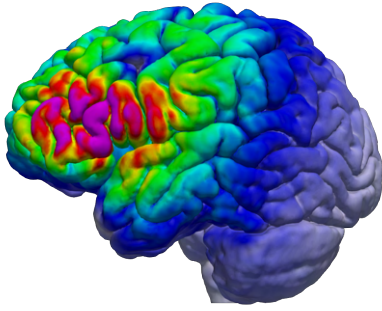
subject 27



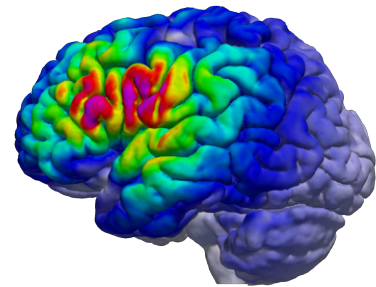
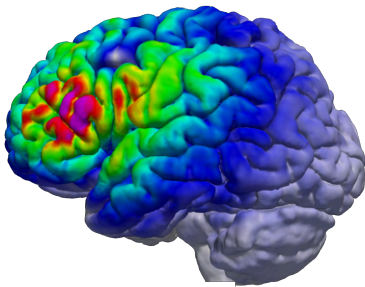
aIFG session

pIFG session

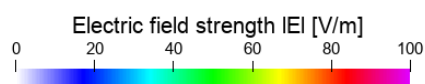
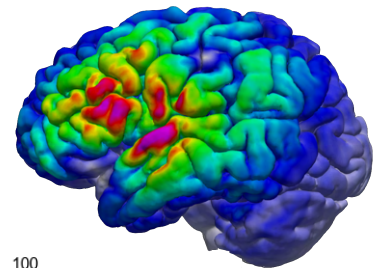
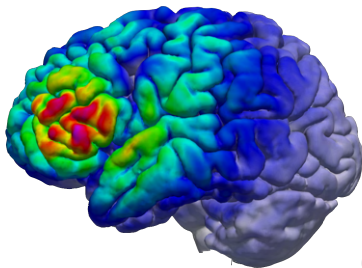
subject 28



subject 29



subject 30



Supplementary Figure 4: Electric fields induced by TMS for the aIFG and pIFG stimulation conditions for each experimental subject. The legend shows induced electrical fields (V/m).